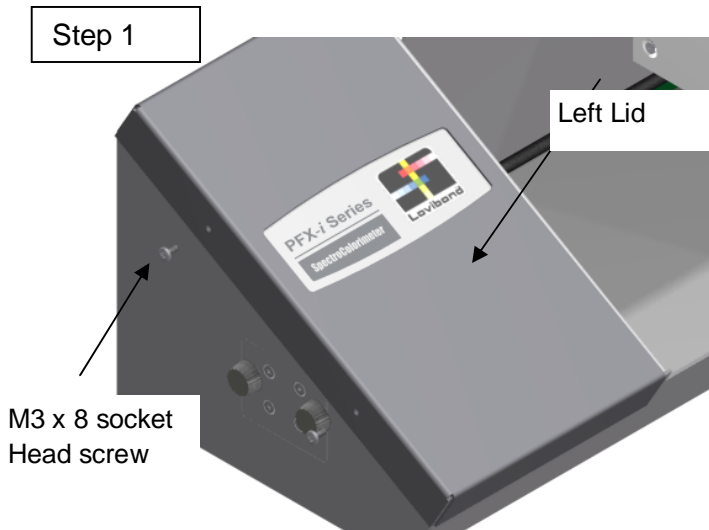


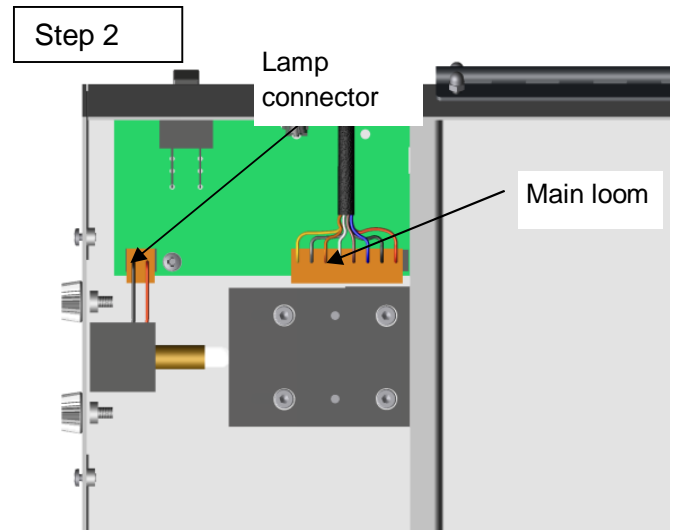
# PFXi Replacement of the Power Board



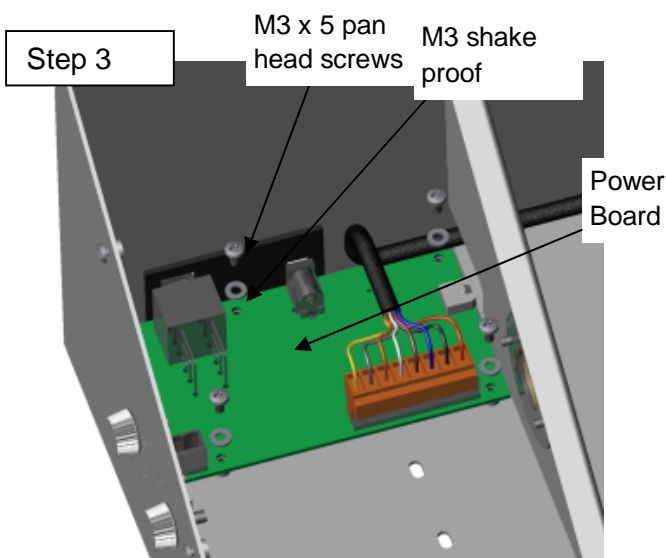
Disconnect from the power supply before continuing.



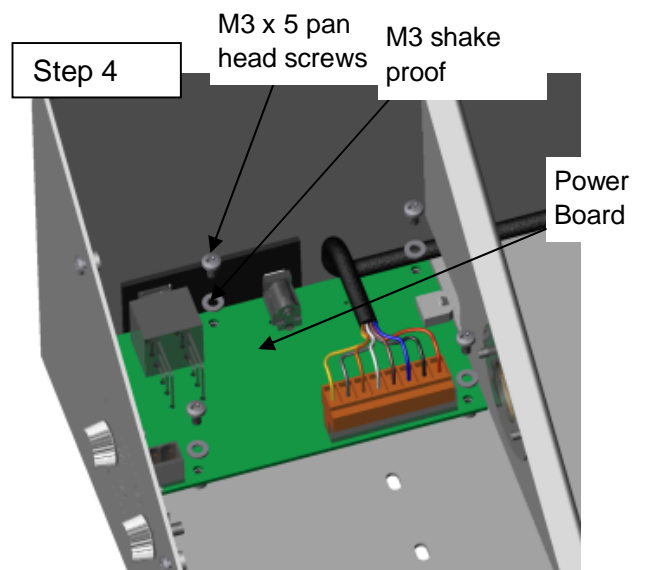
Remove the left lid carefully by removing the 2x M3 x 8 socket head screws



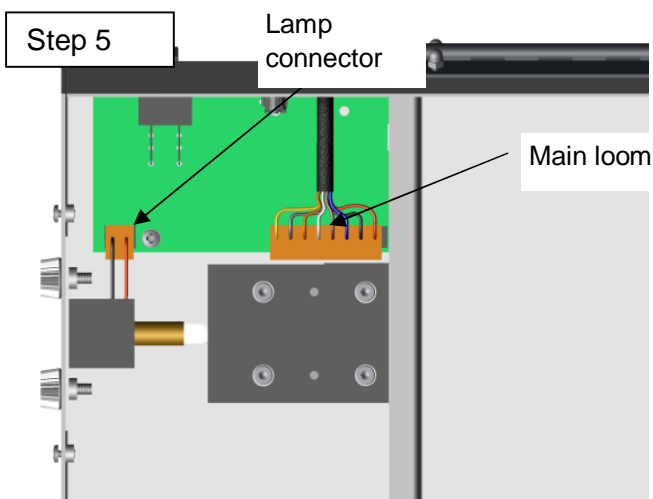
Disconnect the Lamp Holder Assembly connector and the Main Loom connector from the Power Board.



Remove the Power Board by removing the 4x M3 x 6 pan head screws and 4x M3 shake proof washers.



Replace the Power Board by replacing the 4x M3 x 6 pan head screws and 4x M3 shake proof washers.



Replace the Lamp Holder Assembly connector and the Main Loom connector to the Power Board.



Replace the left lid by replacing the 2x M3 x 8 socket head screws.