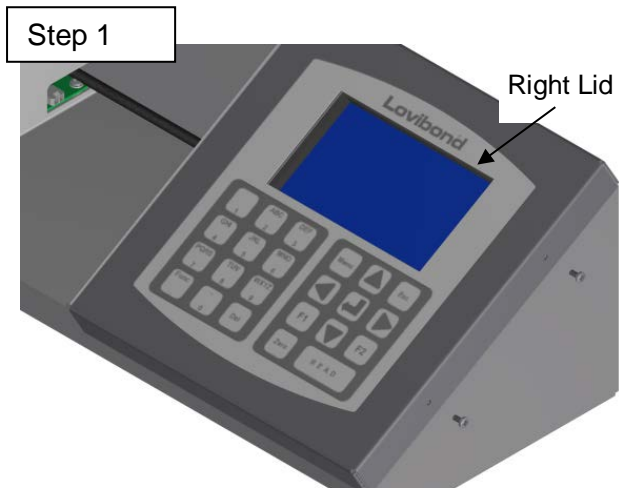


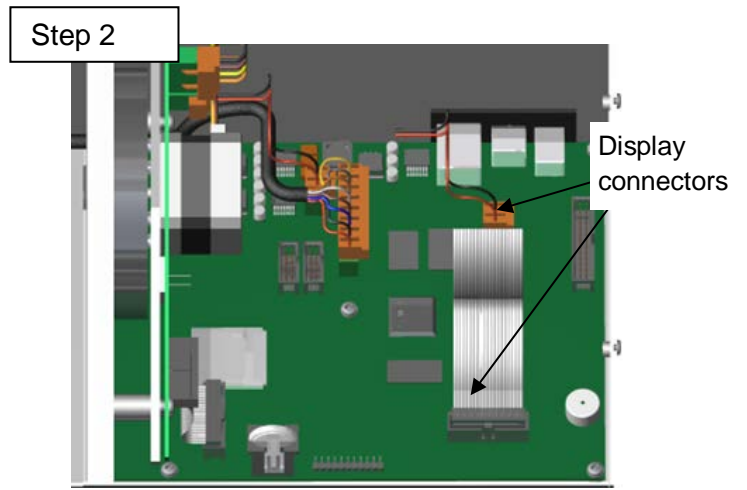
PFXi Replacement of the Display



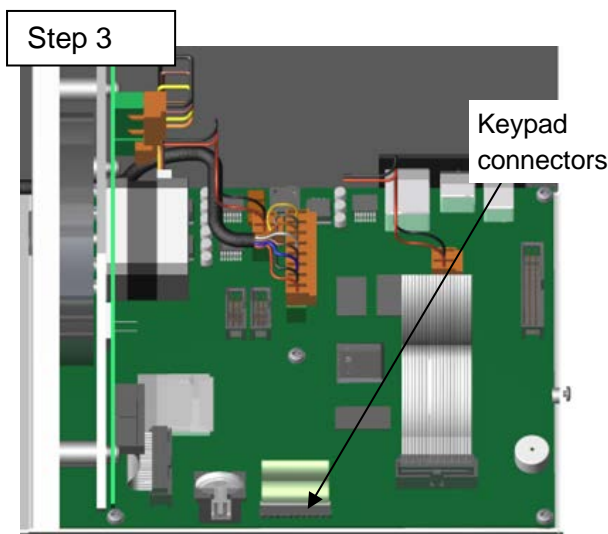
Disconnect from the power supply before continuing.



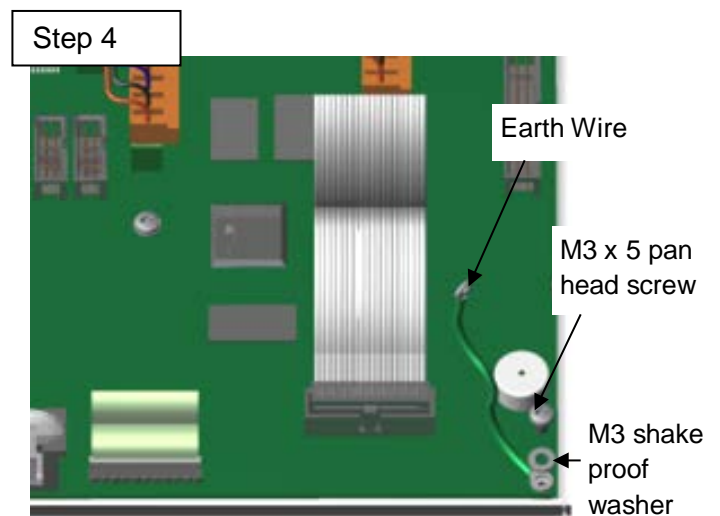
Remove the right lid carefully by removing the 2x M3 x 5 pan head screws



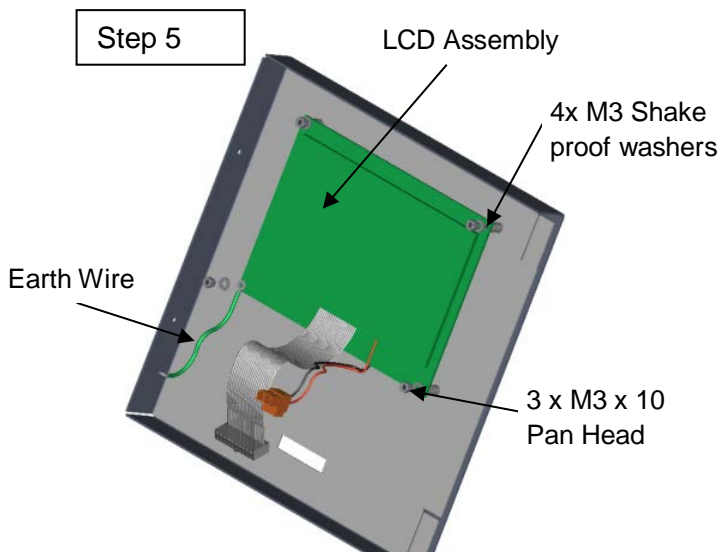
Remove the Display connectors from the connectors on the Main boards as shown.



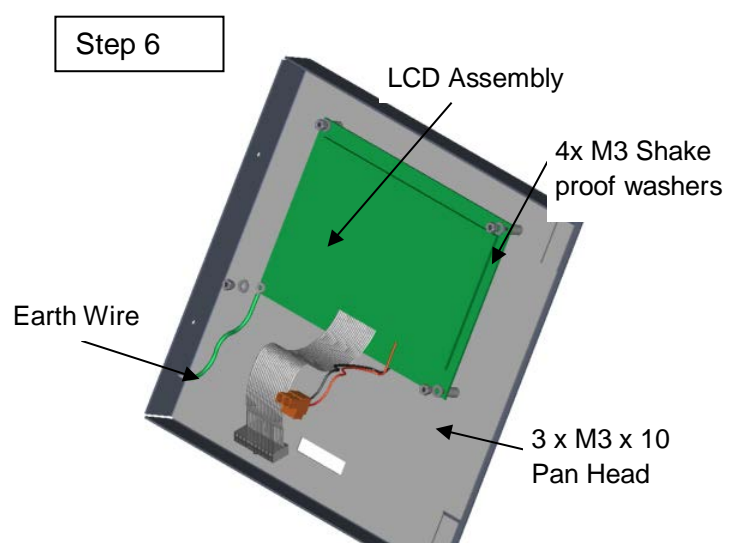
Remove the keypad connector to the connectors on the Main Boards as shown.



Disconnect the Earth Wire from the Main Board using 1x M3 x 5 pan head screw and 1x M3 shake proof washer as shown.

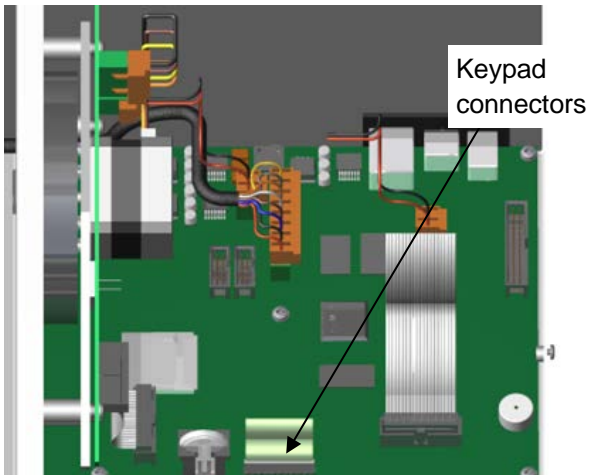


Remove the LCD Assembly from the inside of the right lid by unscrewing the M3 x 10 pan head screws and the M3 shake proof washers as shown.



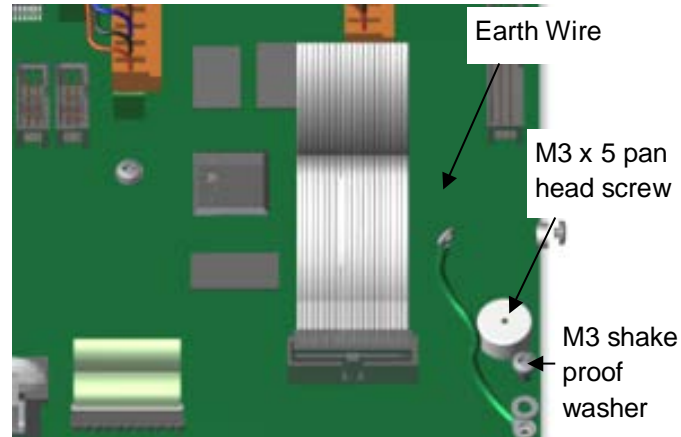
Replace the new LCD Assembly using 3x M3 x 10 pan head screws and 3x M3 shake proof washers as shown. Attached the Earth Wire (137390) in the bottom left corner using 1x M3 x 10 Pan head screw and 1x M3 shake proof washer.

Step 7



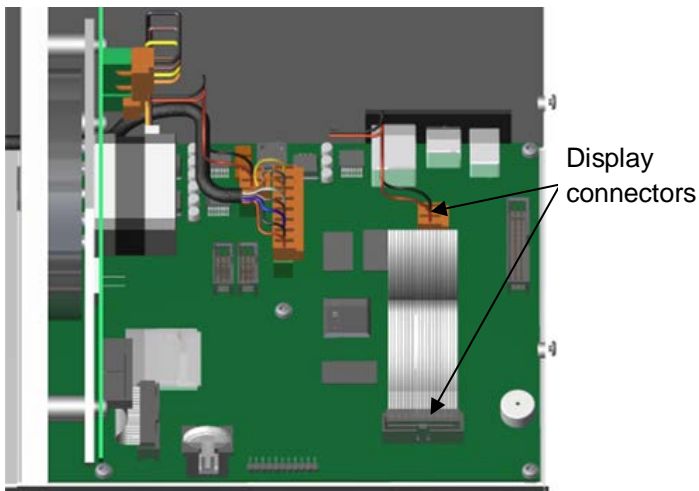
Replace the keypad connector to the connectors on the Main Boards as shown.

Step 8



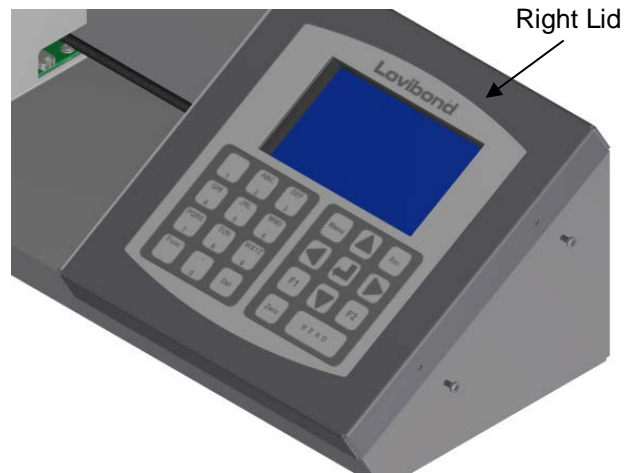
Attach the Earth Wire to the Main Board using 1x M3 x 5 pan head screw and 1x M3 shake proof washer as shown.

Step 9



Attach the Display connectors to the connectors on the Main boards as shown.

Step 10



Replace the right lid carefully by replacing the 2x M3 x 8 pan head screws